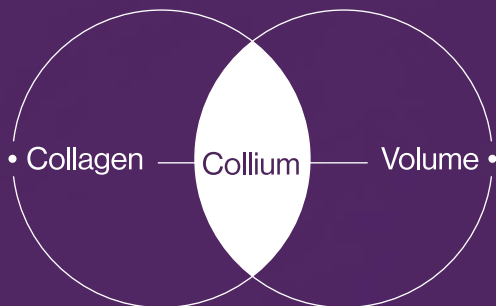


COLLIUM

Rediscover Youthful Radiance:
Enhance Your Skin's Volume and Age Gracefully with Collium



What is the Collium?



Collium is a compound term that combines "Collagen" and "Volume," signifying its purpose to create voluminous skin in conjunction with collagen.

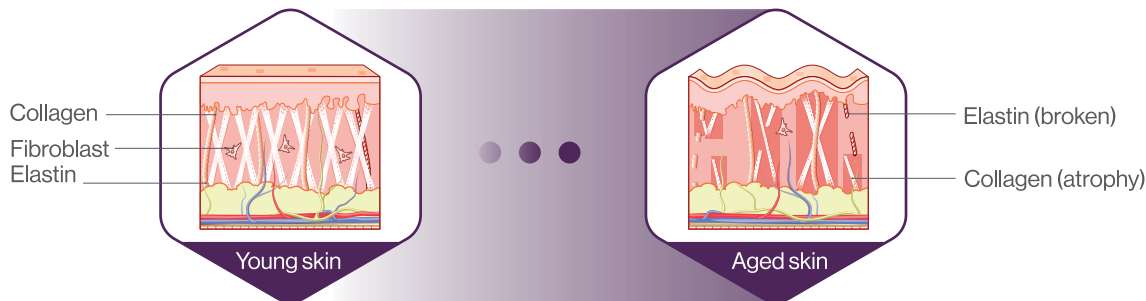
Collagen is a primary protein component of our body's connective tissues (blood vessels, bones, teeth, muscles, etc.), and it plays an important role in various aspects, including skin beauty, preventing arterial hardening, and improving joint health.

The main ingredient in Collium is Atelo Collagen, which closely matches the collagen found in the skin's epidermis, with a 99% similarity. It has removed antigenic telopeptides to minimize immune reactions. It fills collagen into sagging skin, not only creating volume but also activating the generation and metabolism of other skin cells.

This aids in improving skin tone and enhancing skin elasticity.



Why is Collagen necessary for the skin?



As you age, the process of collagen production in the skin slows down. On average, starting from the age of 25, the skin loses 1% per year in the production of collagen, and it almost stops after the age of 60. Collium, with its main ingredient Atelo Collagen, helps to restore collagen fibers and stimulate fibroblasts, facilitating natural regeneration and the restoration of the original structure. It also effectively improves skin density, increases elasticity and firmness, and can delay the aging process.



Active ingredient
- **Atelo Collagen**

Atelo Collagen is derived from natural collagen, which is found in the skin and connective tissues.

1. Biocompatibility:

Atelo Collagen is safe to use; it is highly compatible with the human body and rarely causes allergic reactions or side effects when used in medical procedures or skin care products.

2. Skin Rejuvenation:

Well-known for its ability to improve skin texture, elasticity, and moisture content.

Atelo Collagen is often used in skin care products and medical procedures aimed at promoting collagen production, resulting in smoother and more youthful-looking skin.

It can be beneficial for those seeking a more youthful appearance.

3. Versatile Applications:

Atelo Collagen has applications in both cosmetics and the medical field. In cosmetics, it is used in serums, creams, and masks to support skin health. In the medical field, it is utilized in various procedures, such as tissue engineering and wound healing, showcasing its versatility and efficacy.

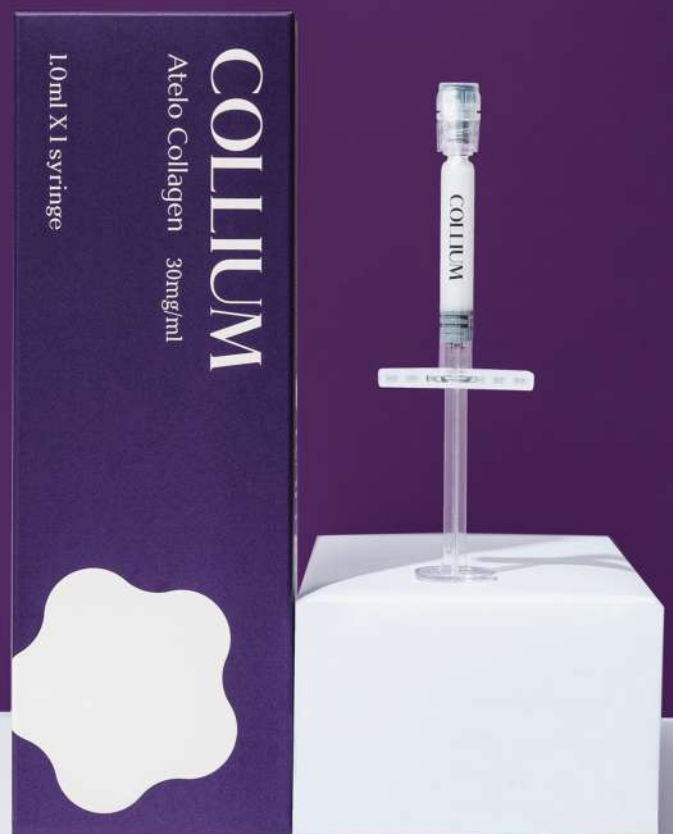
Strengths of Collium

- 01 Sterile and Purified Collagen product.
- 02 Comes dissolved in a phosphate solution (physiological saline with phosphate) for soft tissue augmentation, packaged in 1ml syringes.
- 03 Can be used to address a variety of issues, including wrinkle correction, nasolabial folds (smile lines), scars, and soft tissue problems.
- 04 It undergoes a pepsin process to remove the telopeptides, minimizing antigen reactions.
- 05 Atelo Collagen is made from porcine (pig), not from bovine (cow). This type of collagen is structurally similar to human collagen, making it well-suited for use in the human body.
- 06 Unlike bovine (cow) collagen, Atelo Collagen used in Collium is not associated with the risk of BSE (Bovine Spongiform Encephalopathy), commonly known as "mad cow disease," making it a safer option.

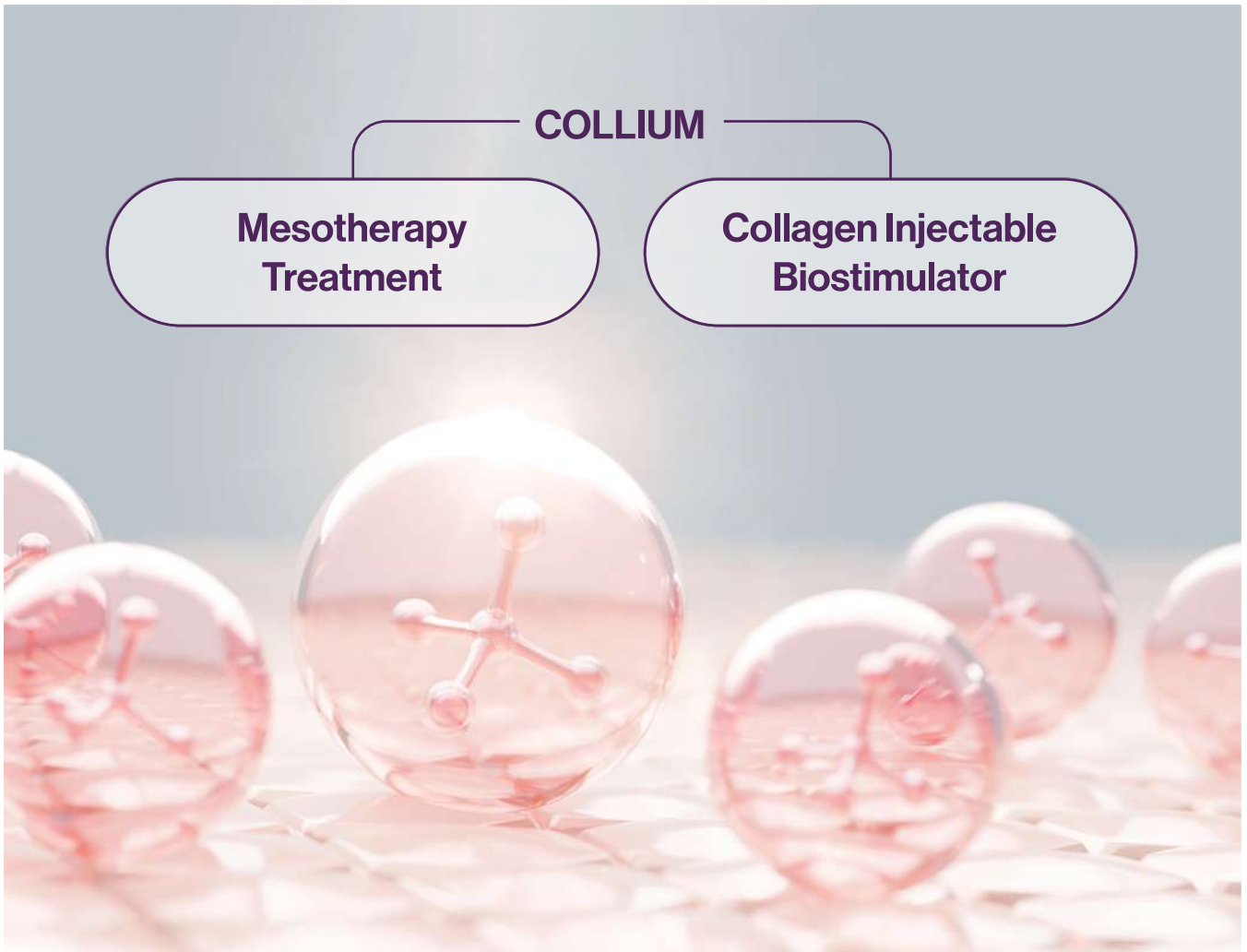
Areas of Application

- Whole face
- Neck
- Back of hands

*The maximum recommended amount per treatment is 1ml.



Usage Methods



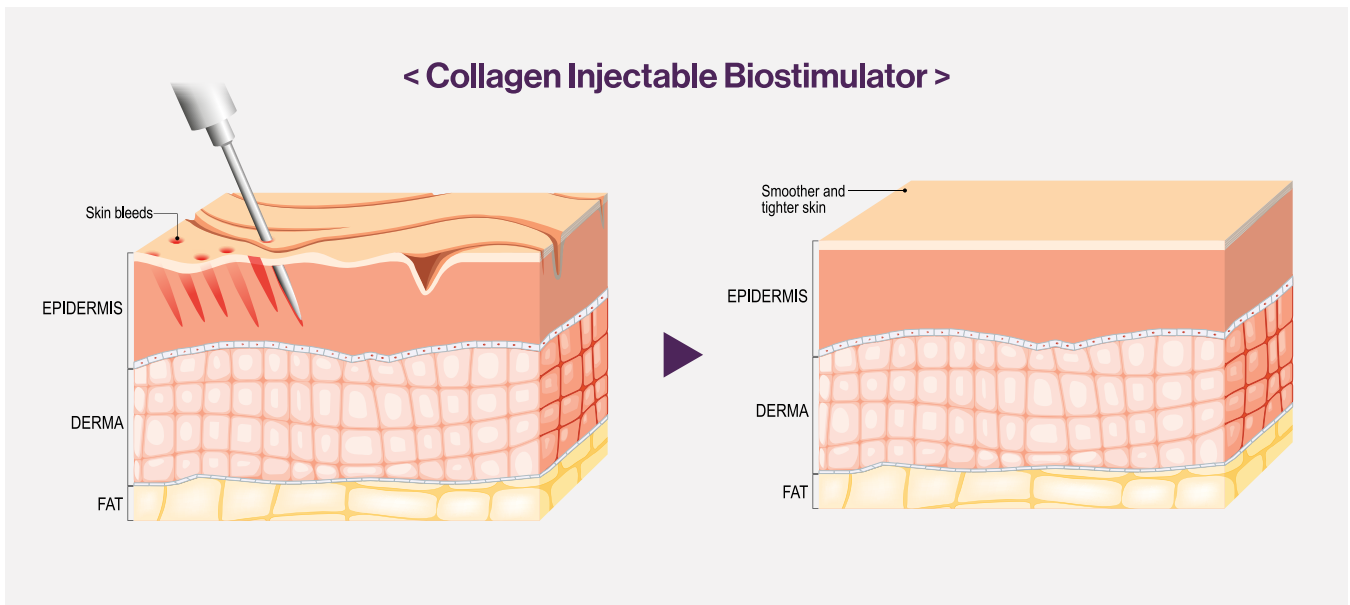
1. Mesotherapy Treatment

Injecting Collium into the entire epidermal or basal layers of the face is a suitable treatment method for clients seeking overall skin rejuvenation, healing of acne scars, achieving firmer and smoother skin, and improving skin tone. This method can address general skin damage and promote a more youthful and even complexion.

It is possible to procedure with the Meso gun which allows for pre-setting of depth and volume or the Nappage Technique, which injects into the epidermal layer, and the Papule Technique, which injects into the basal layer.

2. Collagen Injectable Biostimulator

While most HA (Hyaluronic Acid) fillers can be injected from the epidermal layer to the muscular fascial layer based on the client's needs, Collium, due to its product characteristics, injections deeper than the epidermal are not recommended.



A Collium

It is possible to inject Collium into the dermis layer of the skin, and it's important to inject small amounts thinly. (1ml Collium can be used for the whole face.) However, more ml of Collium is required to achieve the same effect when injected deeply, so it is not recommended. Additionally, injecting wrong too deep can lead to side effects such as nodules, so it is recommended to perform injections maximum of 1ml per session.

B Collium + Reglory PDRN

It is recommended to combine Collium with skin booster products or non-crosslinked HA (Hyaluronic Acid) products such as Reglory PDRN, Kiara Reju, or Hyaron. Mixing these products can contribute to various improvements in the skin, including enhanced skin elasticity, wrinkle reduction, skin rejuvenation, and skin brightening.

Steps for Procedure:

1. Thoroughly disinfect the treatment area before the procedure.
2. Apply the topical anesthesia if necessary.
3. Use a disposable Syringe Mixing Tube to mix around 6 times.
4. Insert needles into the syringe.
5. Inject the predetermined amount into the treatment area according to the physician's judgment.
6. After injection, massage the treatment area to ensure even distribution of the injected substance.



Precautions

- + Follow standard precautions for intradermal injections.
- + Since this product is packaged after sterilization, ensure there is no damage to the product before use (Prohibited re-use).
- + Always exercise caution due to the risk of infection.
- + Have a thorough anatomical knowledge of the treatment area.
- + Do not inject into permanent transplant areas.
- + Do not expose the treatment area to extreme environments such as heat or sunbathing until any swelling or warmth in the treatment area has subsided.
- + Do not use the product on patients with expectations exceeding the therapeutic effect.
- + There is no clinical data on the efficacy and safety of injecting into areas previously treated with other fillers.
- + Do not inject into areas around the eyes, including the glabella, where there is a possibility of entering veins due to thin skin, and exercise special caution when treating these areas.
- + The safety and efficacy of lip augmentation procedures have not been established.
- + Injection into patients with a history of herpetic eruptions may lead to the recurrence of herpetic eruptions.
- + Safety has not been established for patients with a history of keloid formation, hyperpigmentation, or hypertrophic scars.
- + The safety and efficacy of long-term use beyond the established period through clinical studies have not been confirmed.
- + This medication is considered safe for repeat injections.

Q&A



Q What are the advantages of Collium when compared to regular hyaluronic acid fillers?

A Collium is derived from natural collagen protein, providing a naturally compatible ingredient for immediate skin improvement. By stimulating the body's collagen production, it offers the potential for gradual, long-term enhancement of skin quality over time. Therefore, Collium is characterized by not only short-term improvements but also the potential for long-term skin enhancement.

Q Are there patients for whom it is not possible to use Collium?

A Patients with autoimmune diseases, hypersensitivity to animal proteins such as pork, pregnancy, breastfeeding, and patients with inflammatory skin conditions at the injection site are not suitable for the procedure.

Q Is it okay to use Collium with non-crosslinked hyaluronic acid skin booster or PDRN products?

A Yes, it is possible to use them together, and even better results can be achieved when used in conjunction with Reglory PDRN.

Q I have bruising after the procedure. Is this normal?

A Just like with other injectable procedures, swelling, bruising, or discomfort can occur at the treated area. These are natural symptoms and will disappear after 1 to 2 weeks.

Specific Precautions



It is recommended to avoid washing the treated area immediately after filler injection, and it is best to wait for 24 hours.



After the procedure, the skin may experience bruising and potential pigment changes in the treated area. It is recommended to avoid direct sunlight and apply sunscreen.



Activities that cause heavy sweating, including swimming and strenuous exercise, should be avoided for 48-72 hours.



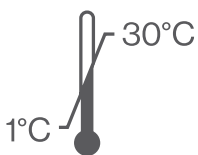
Any skin procedures that may irritate the skin, such as peeling, should be postponed for at least 15 days.



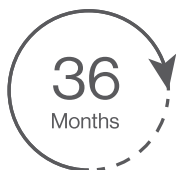
If you consume alcohol and smoke, it is recommended to avoid them for 48 hours as they may prolong bruising.

Product Information

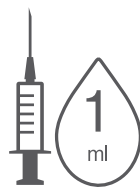
Info



Storage



Shelf Life



Package



Detail

Name	Collium
Main Ingredient	Atelo Collagen 30mg/ml
Shelf Life	36 months from the date of manufacture
Package	1.0ml * 1 syringe

